

MINING SOLUTIONS



BUILT BY MINERS FOR MINERS



BOST GROUP

Mining



Contents

UNDERGROUND SOLUTIONS

REFUGE CHAMBERS - PORTABLE

REFUGE CHAMBERS - STATIONARY

BUCKETS - LH SERIES

BUCKETS - R SERIES

TRUCK TRAYS

REFUELLING STATIONS

LADDER WAYS

DECLINE SETS

OPEN CUT SOLUTIONS

BUCKETS - EXCAVATOR SERIES

BUCKETS - LOADER SERIES



An underground mining scene featuring a large yellow wheel loader in the foreground, its bucket raised and dumping material into the bed of a yellow haul truck. The truck is illuminated by bright red lights, and its headlights are on. The background shows a dimly lit tunnel with rough rock walls and some structural supports. The image is overlaid with a large, semi-transparent green and blue geometric shape that frames the scene.

SOLUTIONS FOR THE UNDERGROUND



PORTABLE REFUGE CHAMBERS

ROBUST YET HIGHLY PORTABLE

The Best Portable Refuge Chambers have been specially designed to be used in confined working areas such as development headings yet to be robust & highly portable enough to be moved around the working areas of the mine quickly and efficiently, without the need for permanent external electrical connections.



STANDARD FEATURES:

- / SLIM DESIGN FOR EASE OF LOCATION
- / FLOOD CONTROL WATER SEPARATOR & 3 STAGE AIR FILTRATION
- / MEDICAL GRADE OXYGEN REGULATOR
- / CARBON DIOXIDE SCRUBBER
- / SPLIT SYSTEM AIR CONDITIONER
- / 6MM STEEL PLATE CONSTRUCTION, FULL SEAM WELDING
- / ESCAPE HATCH WITH EXTERNAL HANDLE
- / INTERNAL LED LIGHTING
- / FIRST AID KIT / STRETCHER / EYE WASH / WATER
- / OBSERVATIONAL PORTHOLE WINDOW
- / CUSHIONED SEATING
- / FORKLIFT POCKETS (FRONT & SIDES)
- / LIFTING LUGS / ROBUST SKID BASE
- / SIREN
- / EXTERNAL WARNING LED'S
- / LOW BATTERY & AC POWER LOSS INDICATOR LED
- / REFLECTIVE SIGNAGE
- / DESIGNED TO WA REFUGE CHAMBER GUIDELINES
- / MEETS ALL APPLICABLE AUSTRALIAN STANDARDS
- / VICTRON BATTERY MONITORING
- / 48V BATTERY SYSTEM
- / 240V AC SUPPLY

OPTIONAL INCLUSIONS:

- / EXTENDED BATTERY BACK UP DURATION
- / DIESEL PARTICULATE MATTER (PDM) MONITORING
- / 1000v STEP DOWN TRANSFORMER
- / CO, CO2 & O2 DIGITAL GAS MONITORS - Enquire about our options.
- / 60AMP MACEY OUTLET
- / IT LIFTING HITCH

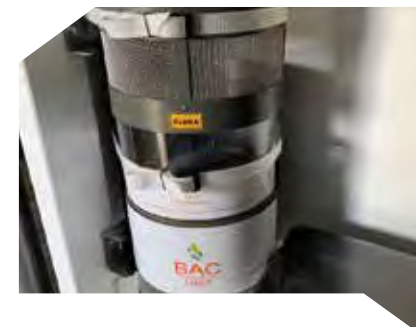


DIMENSIONS (PORTABLE MODELS)	HEIGHT (M)	WIDTH (M)	LENGTH (M)	WEIGHT (KG)	MINIMUM SAFE ENTRAPMENT (HRS)
4 PERSON	1.950	1.5	2.615	3,500 (STOCKED)	36
6 PERSON	1.950	1.5	3.220	4,000 (STOCKED)	

BUILT BY MINERS FOR MINERS

 **ASK FOR A CUSTOMISED QUOTATION**
EMAIL: INFO@BOSTGROUP.COM.AU

 **DISCUSS YOUR REQUIREMENTS**
CALL: 1800 267 847



STATIONARY REFUGE CHAMBERS

UNPARALLELED DESIGN

The Stationary Chambers design has been drawn from 120+ years of underground mining experience, which is unparalleled in the industry today. The Stationary Refuge Chambers are fully compliant with the 2009 Western Australian Guidelines for Refuge Chambers in Metalliferous Mines and have a number of unique features that make them ideally suited to the hard rock mining industry.



STANDARD FEATURES:

- / CARBON DIOXIDE SCRUBBER
- / HIGH EFFICIENCY: SPLIT SYSTEM AIR CONDITIONER
- / FLOOD CONTROL WATER SEPARATOR & 3 STAGE AIR FILTRATION
- / 6MM STEEL PLATE CONSTRUCTION / FULL SEAM WELDING
- / ESCAPE HATCH WITH EXTERNAL HANDLE
- / OBSERVATIONAL PORTHOLE WINDOW
- / FIRST AID KIT / STRETCHER / EYE WASH / WATER
- / FORKLIFT POCKETS (SIDE) / LIFTING LUGS / ROBUST SKID BASE
- / DESIGNED TO WA REFUGE CHAMBER GUIDELINES
- / MEETS ALL APPLICABLE AUSTRALIAN STANDARDS
- / 48V BATTERY SYSTEM
- / BATTERY MONITOR
- / 240V AC SUPPLY
- / FIRE EXTINGUISHER
- / CUSHIONED SEATING
- / INTERNAL LED LIGHTING
- / SIREN
- / EXTERNAL WARNING LED'S
- / LOW BATTERY & AC POWER LOSS INDICATOR LED
- / REFLECTIVE SIGNAGE

OPTIONAL INCLUSIONS:

- / 1000V STEP DOWN TRANSFORMER
- / EXTENDED BATTERY BACK UP DURATION
- / 60AMP MACEY OUTLET
- / DIESEL PARTICULATE (PDM) MONITORING
- / CO, CO2, O2 DIGITAL GAS MONITORS

DIMENSIONS (STATIONARY MODELS)	HEIGHT (MM)	WIDTH (MM)	LENGTH (MM)	WEIGHT (KG)	MINIMUM SAFE ENTRAPMENT (HRS)
8 PERSON	2200	2040	4130	5,000 (STOCKED)	36
12 PERSON	2200	2040	5280	6,700 (STOCKED)	
16 PERSON	2200	2040	6000	7,500 (STOCKED)	
20 PERSON	2200	2040	6930	8,000 (STOCKED)	
30 PERSON	2200	2040	9230	9,000 (STOCKED)	



BUILT BY MINERS FOR MINERS

 **ASK FOR A CUSTOMISED QUOTATION**
EMAIL: INFO@BOSTGROUP.COM.AU

 **DISCUSS YOUR REQUIREMENTS**
CALL: 1800 267 847



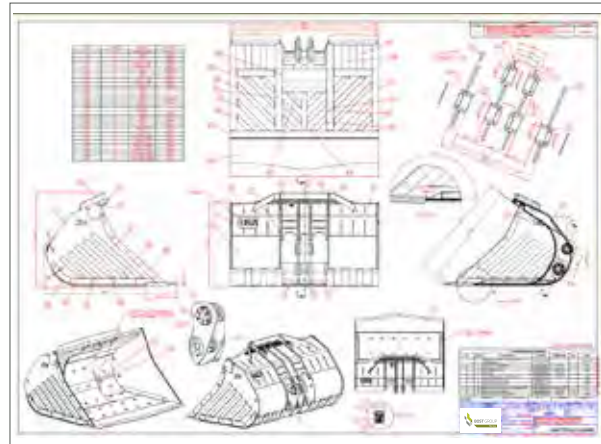
LH SERIES UNDERGROUND BUCKETS

EXCEEDING EXPECTATIONS

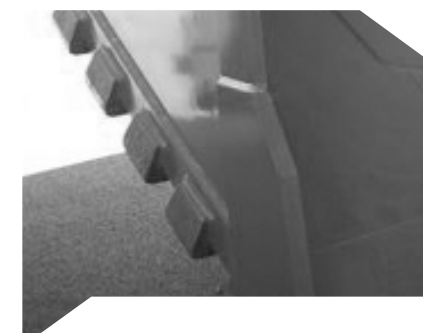
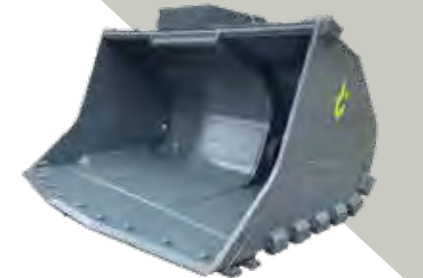
Strength & reliability are the key features in every operation. Increased wear life generates a higher profitability for our clients & a peace of mind for operators & maintenance crews.

The highest quality materials sourced from international suppliers and manufactured with a dedication in craftsmanship where perfection is only just good enough.

The ultimate result is a reduced cost per ton for our clients. We understand that in mining, the equipment is only as productive as the loading bucket.



SPECIFICATIONS	UNIT	LH 514 (IN STOCK)	LH 517 (IN STOCK)
CAPACITY	M ³	6.0	8.6
WEIGHT	KG	4250	4480
WIDTH	MM	2965	3040
LIP PLATE	MM	50 (HARDOX 450)	50 (HARDOX 450)
GET LIP SHROUDS		SHARK BLUE POINTER GET	SHARK BLUE POINTER GET
PROFILE BAR	MM	40 (HARDOX 450)	40 (HARDOX 450)
SIDE CUTTERS	MM	32 (HARDOX 450)	32 (HARDOX 450)
FLOOR PLATE	MM	12 (HG785D)	12 (HG785D)
HEEL SHROUDS	QTY		12
TOP CORNER SHROUDS	QTY		2
EXTERNAL WEAR PLATE	MM	20 (HARDOX 450)	20 (HARDOX 450)



BUILT BY MINERS
FOR MINERS

 **ASK FOR A CUSTOMISED QUOTATION**
EMAIL: INFO@BOSTGROUP.COM.AU

 **DISCUSS YOUR REQUIREMENTS**
CALL: 1800 267 847

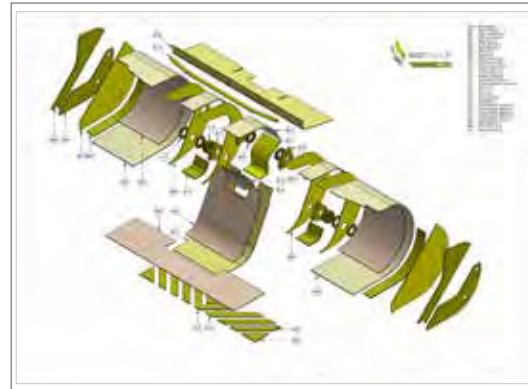
 **BOST GROUP**
Mining

R SERIES UNDERGROUND BUCKETS

TAILORED TO YOUR NEEDS

Our commitment to our mining customers revolves around an understanding. An understanding that every operation has a unique need and for our clients to succeed in today's environment, equipment must meet these needs.

Through detailed focus on the customer and their unique requirements, we build an understanding that drives a commitment to provide efficient solutions tailored to these needs.



SPECIFICATIONS	UNIT	R 1300 (IN STOCK)	R 1700 (IN STOCK)	R 2900 (IN STOCK)
CAPACITY	M ³	3.1 / 3.4	5.7 / 6.7	7.2 / 8.3 / 8.8
WEIGHT	KG	3709 / 4050	5250 / 5500	6600 / 680 / 7200
WIDTH	MM	2180 / 2380	2770 / 2975	3050 / 3150 / 3350
LIP PLATE	MM	50 (HARDOX 450)	50 (HARDOX 450)	50 (HARDOX 450)
GET LIP SHROUDS		SHARK BLUE POINTER PLUS KEECH LIP AVAILABLE FOR 3.4M ³		
PROFILE BAR	MM	40 (HARDOX 450)	40 (HARDOX 450)	40 (HARDOX 450)
SIDE CUTTERS	MM	32 (HARDOX 450)	32 (HARDOX 450)	40 (HARDOX 450)
FLOOR PLATE	MM	16 (HG785D)	16 (HG785D)	12 (HG785D)
LEFT / RIGHT SIDE PLATES	MM	16 (HG785D)	16 (HG785D)	16 (HG785D)
HEEL SHROUDS	QTY	10 (BOST)	12 (BOST)	12 (BOST)
CORNER WEAR PLATES	MM	20 (HARDOX 450)		
TOP CORNER SHROUDS	#	2 (SHARK)	2 (SHARK)	2 (SHARK)
EXTERNAL WEAR PLATE	MM	20 (HARDOX 450)	20 (HARDOX 450)	20 (HARDOX 450)



**BUILT BY MINERS
FOR MINERS**

 **ASK FOR A CUSTOMISED QUOTATION**
EMAIL: INFO@BOSTGROUP.COM.AU

 **DISCUSS YOUR REQUIREMENTS**
CALL: 1800 267 847

 **BOST GROUP**
Mining

T SERIES UNDERGROUND TRUCK TRAYS

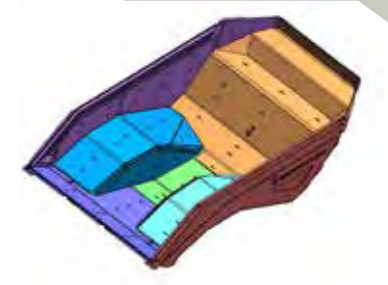
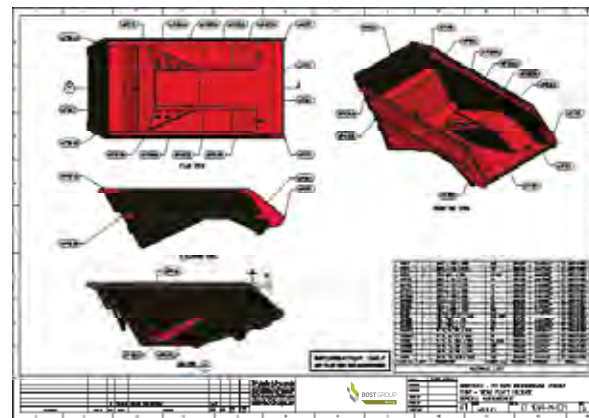
REAL SOLUTION FOR REAL DEMAND

With design and engineering proficiency, coupled with seven years of relationships and product development, Bost Group's unique offering is cognisant to the real life demands of mine sites also offering quicker lead times and significantly cheaper pricing.

Product development is a team game involving Bost Group, our manufacturing partners and our clients to ensure we achieve the exact outcomes required – a true collaboration.

Primary analysis indicates the following benefits:

- / Reduced loading time by correct sizing of bucket to the tray.
- / Potential 10% - 12% productivity gain in the load and haul component.
- / Reduced unit cost from increased volumes.
- / Financial advantage of unit replacement in comparison to unit rebuild.
- / Low initial capital cost.
- / Low cost pre-fab wear packages and replacement kits, saving on-site time and resource.
- / Competitive and flexible steel options.
- / Reduced machine stand down with 'in-stock' guarantees.
- / Maximum owner efficiency with tub capacity optimisation.



**BUILT BY MINERS
FOR MINERS**

 **ASK FOR A CUSTOMISED QUOTATION**
EMAIL: INFO@BOSTGROUP.COM.AU

 **DISCUSS YOUR REQUIREMENTS**
CALL: 1800 267 847

 **BOST GROUP**
Mining

RS99 REFUELLING STATIONS

EFFICIENCY THROUGH INNOVATION

Bost Refuelling Stations alleviate the time consuming and unnecessary task of bringing equipment to the surface when only a refuel is required!

***REDESIGN DUE 2018 - STAY TUNED FOR NEW DEVELOPMENTS!**

STANDARD FEATURES:

- / SOLID STEEL CONSTRUCTION
- / FIRE SPY FIRE SUPPRESSION SYSTEM - AUTO & MANUAL ACTIVATION
- / FIRE ROLLER SHUTTER DOOR - AUTO ACTIVATION
- / SURFACE TREATMENT OF ZINC ENRICHED PRIMER & TOP COAT TWO PACK EPOXY
- / DEAD MAN VALVE FOR FUEL OPERATION
- / LOW PROFILE, BUILT ON A GALVANIZED SKID BASE FOR EASE OF SHIFTING UNDERGROUND, ALSO PROVIDING GOOD OPERATOR VISION WHEN CHANGING TANKS.
- / TANKS BUILT TO COMPLY WITH AS1940 AND AS1962, AND SELF BUNDED TO CAPTURE 150% OF CONTENTS - GREATLY REDUCING ENVIRONMENTAL RISK.
- / TANKS COME COMPLETE WITH CORNER PROTECTION AND ADDED PROTECTION AROUND THE FORK SLOTS
- / AVAILABLE IN 1500L / 2000L / 3000L SIZE TANK OPTIONS

OPTIONAL INCLUSIONS:

- / ELECTRICAL FUEL MANAGEMENT SYSTEM
- / OPERATOR TAG ON SYSTEM
- / FAST FILL NOZZLE WITH FLOW RATE OPTION - UP TO 300LPM
- / LV NOZZLE WITH FLOW RATE OPTION - 55LPM TO 200LPM

SPECIFICATIONS	HEIGHT (MM)	WIDTH (MM)	LENGTH (MM)	WEIGHT (KG)
RS99 SHELL	2400	1860	5340	4500
RS 15	600	1600	3100	1340
RS 20	750	1600	3100	1400
RS 30	1100	1600	3100	1540

**BUILT BY MINERS
FOR MINERS**

 **ASK FOR A CUSTOMISED QUOTATION**
EMAIL: INFO@BOSTGROUP.COM.AU

 **DISCUSS YOUR REQUIREMENTS**
CALL: 1800 267 847



11



 **BOST GROUP**
Mining

➤ LADDER WAYS

STAY SIMPLE, STAY SAFE

- / Modular Design
- / 1m, 2m, 3m Sections available
- / 3 points of contact for climber
- / ISO Certified
- / World class design & engineering
- / Expert manufacturing
- / First Grade materials
- / Safety Rest Platforms
- / Assemble onsite for cost effective shipping
- / Available in Double & Triple style
- / Galvanised
- / Australian designed
- / Meets Australian standards (AS1657)
- / Optional: 24V DC Lighting
- / Can be configured to contain mine pipe work



[IMAGE USED FOR GRAPHIC PURPOSES ONLY.]

**BUILT BY MINERS
FOR MINERS**



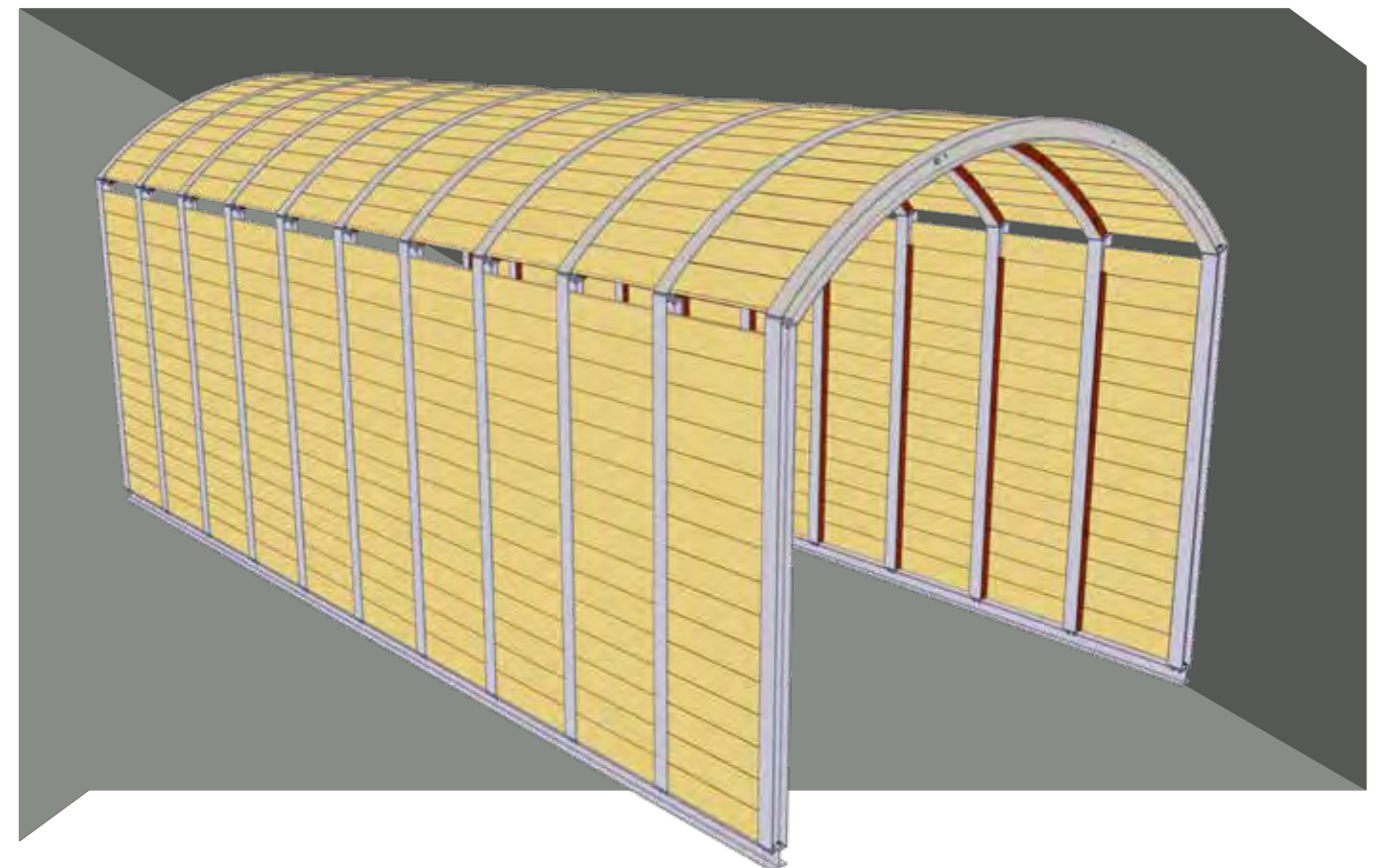
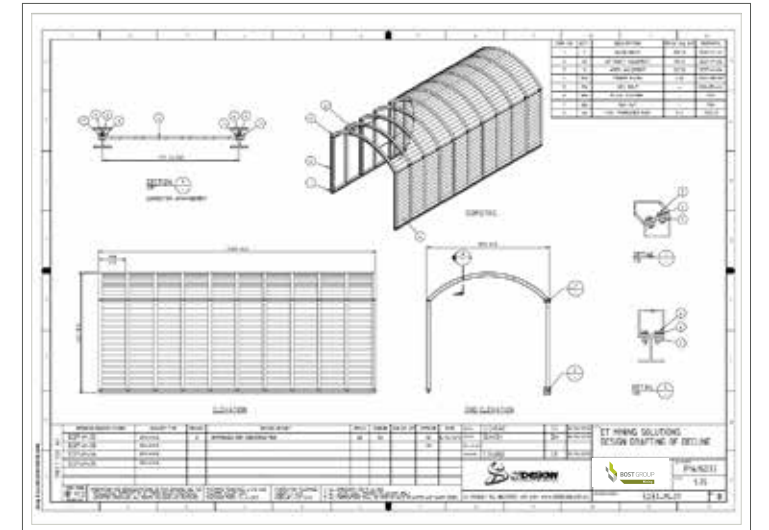
ASK FOR A CUSTOMISED QUOTATION
EMAIL: INFO@BOSTGROUP.COM.AU

DISCUSS YOUR REQUIREMENTS
CALL: 1800 267 847

➤ DECLINE SETS

PORTAL STABILITY

- / QUICK & EASY ONSITE ASSEMBLY
- / 5.5M X 5.5M X 11.7M
- / 3.5M RADIUS ARCH
- / FULLY GALVANISED
- / SUPPLIED IN KIT FORM
- / ASSEMBLY INSTRUCTIONS INCLUDED
- / TIMBER INSERTS NOT SUPPLIED





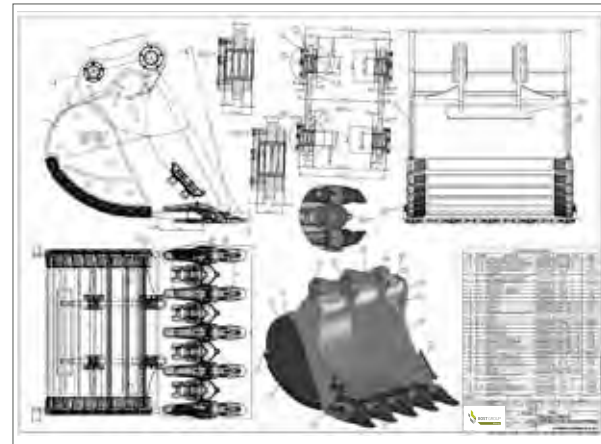
SOLUTIONS FOR THE OPEN CUT



3V SERIES EXCAVATOR BUCKETS

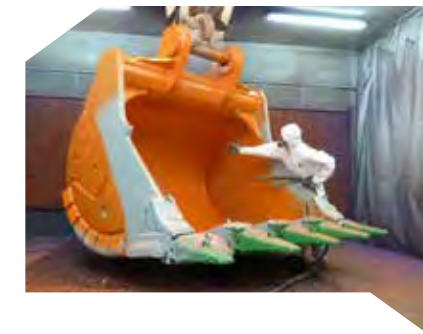
EXCEEDING EXPECTATIONS

Excavator buckets for loading and extraction with tailored profile for heavy duty and special applications. Reinforcements, shrouds and increased thicknesses using the finest anti-wear materials.



SPECIFICATIONS	UNIT	EX1200 (IN STOCK)	EX 3600 (IN STOCK)	RANGE AVAILABLE (6 WEEK MANUFACTURE)
CAPACITY	M ³	6.5	22 - 23	
WEIGHT	KG	7000	23,000	
INTERNAL WEAR LINING		HARDOX	HARDOX	
EXTERNAL WEAR BARS		HARDOX	HARDOX	
GET		NIL	NEW ESCO NEMISYS	
HEEL SHROUD		FEURST	ESCO	
LIP SIZE	MM	90 SEMI DELTA BLADE		
TO SUIT EXCAVATOR		HITACHI EX1200	HITACHI EX3600-6	

**Full specifications available on request*



**BUILT BY MINERS
FOR MINERS**

 **ASK FOR A CUSTOMISED QUOTATION**
EMAIL: INFO@BOSTGROUP.COM.AU

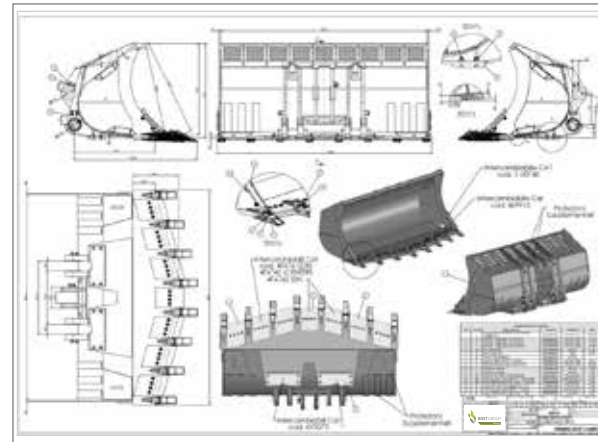
 **DISCUSS YOUR REQUIREMENTS**
CALL: 1800 267 847

 **BOST GROUP**
Mining

3V SERIES LOADER BUCKETS

EXCEEDING EXPECTATIONS

Above ground loader buckets for loading and extraction with tailored profile for heavy duty and special applications. Reinforcements, shrouds and increased thicknesses using the finest anti-wear materials.



SPECIFICATIONS	UNIT	LH 514 (IN STOCK)	LH 517 (IN STOCK)	RANGE AVAILABLE (6 WEEK MANUFACTURE)
CAPACITY	M ³	6.0	8.6	
WEIGHT	KG	4300	5200	
HEIGHT	MM	1820	2100	
WIDTH	MM	2965	3100	
DEPTH	MM	2425	2650	
LIP PLATE	MM	50 (HARDOX 450)	50 (HARDOX 450)	
GET LIP SHROUDS		SHARK BLUE POINTER GET	SHARK BLUE POINTER GET	
PROFILE BAR	MM	40 (HARDOX 450)	40 (HARDOX 450)	
SIDE CUTTERS	MM	32 (HARDOX 450)	32 (HARDOX 450)	
FLOOR PLATE	MM	12 (HG785D)	12 (HG785D)	
HEEL SHROUDS	MM		12	
TOP CORNER SHROUDS	#		2	
EXTERNAL WEAR PLATE	MM	20 (HARDOX 450)	20 (HARDOX 450)	



**BUILT BY MINERS
FOR MINERS**

 **ASK FOR A CUSTOMISED QUOTATION**
EMAIL: INFO@BOSTGROUP.COM.AU

 **DISCUSS YOUR REQUIREMENTS**
CALL: 1800 267 847

DISCLAIMER:
Bost Group uses due care in the preparation of this catalogue but is not responsible or reliable for any content error or omission. All product specifications, technical descriptions are provided for general information, all statements are expressed opinions or suggestions only, and Bost Group accepts no liability for any loss or disadvantage which may be suffered by any person who relies either wholly or in part upon any description, photograph, or statement contained herein. Bost Group maintains a policy of continuous improvement and therefore reserves the right to modify, amend or otherwise alter product design and specifications, and model references without prior notice.

TERMS:
The supply of all products are strictly subject to Bost Group Terms & Conditions. Visit : www.bostgroup.com.au/terms

 **BOST GROUP**
Mining



WA Office & Yard

58 - 64 Furnace Road
Welshpool WA 6106



BOST GROUP

Mining

➤ www.bostgroup.com.au

1800 267 847

Bost Group is a certified company to the following ISO Standards:

